



# THE MSC GROUP

January 2023



# A FAMILY COMPANY

Since 1970, Mr. Gianluigi Aponte has led MSC from its humble one-vessel-operation beginnings, into its current status as a world leader in global container shipping.

The company has seen exponential growth in terms of both volume and fleet capacity, and now serves millions of customers globally, with a much respected 365 day a year operation.

Despite the constant shipping industry consolidation, MSC remains an independent and privately owned company. Our stability allows us to build long-term relationships with all our customers.

Today, the Group employs 150,000 people around the world.



Mr. Diego Aponte  
Group President

Capt. Gianluigi Aponte  
Group Chairman

Mrs. Alexa Aponte Vago  
Group Chief Financial Officer

**“OURS IS A BUSINESS BUILT ON A GENUINE PASSION FOR THE SEA.”**

Captain Gianluigi Aponte



# MSC GROUP OVERVIEW

---

## CARGO DIVISION



## PASSENGER DIVISION

### CRUISE DIVISION



### FERRY DIVISION



# MSC GROUP

## KEY NUMBERS

---

### CARGO DIVISION\*

- Leading shipping conglomerate
- **No 1** shipping line worldwide
- **730** vessels, one of the youngest fleets in the world
- **4** aircrafts
- **260+** routes
- **520** ports of call
- **70** terminals
- **23** million TEU carried annually
- **675** offices
- **155** countries

### PASSENGER DIVISION\*

#### CRUISE DIVISION

Two brands: **MSC Cruises** in the contemporary segment, and **Explora Journeys** in luxury

- **MSC Cruises**
  - **21** modern and technologically advanced ships, **23** by the end of 2025
  - **2.75M\*\*** guests of **180** nationalities welcomed on board, visiting **190 destinations** visited worldwide
  - Represented over 50% of global capacity growth since 2019
- **Explora Journeys**
  - **6** ships on order, two of which under construction
  - Inaugural journey of EXPLORA I taking place in Summer 2023

Worldwide, the MSC Group has more than **150,000** staff on board and ashore (all entities combined).

\*Key numbers estimated end of 2022

© Copyright MSC Mediterranean Shipping Company SA



\*not including GNV and SNAV

\*\*As of 31 Dec. 2019

# MSC'S APPROACH TO SUSTAINABILITY

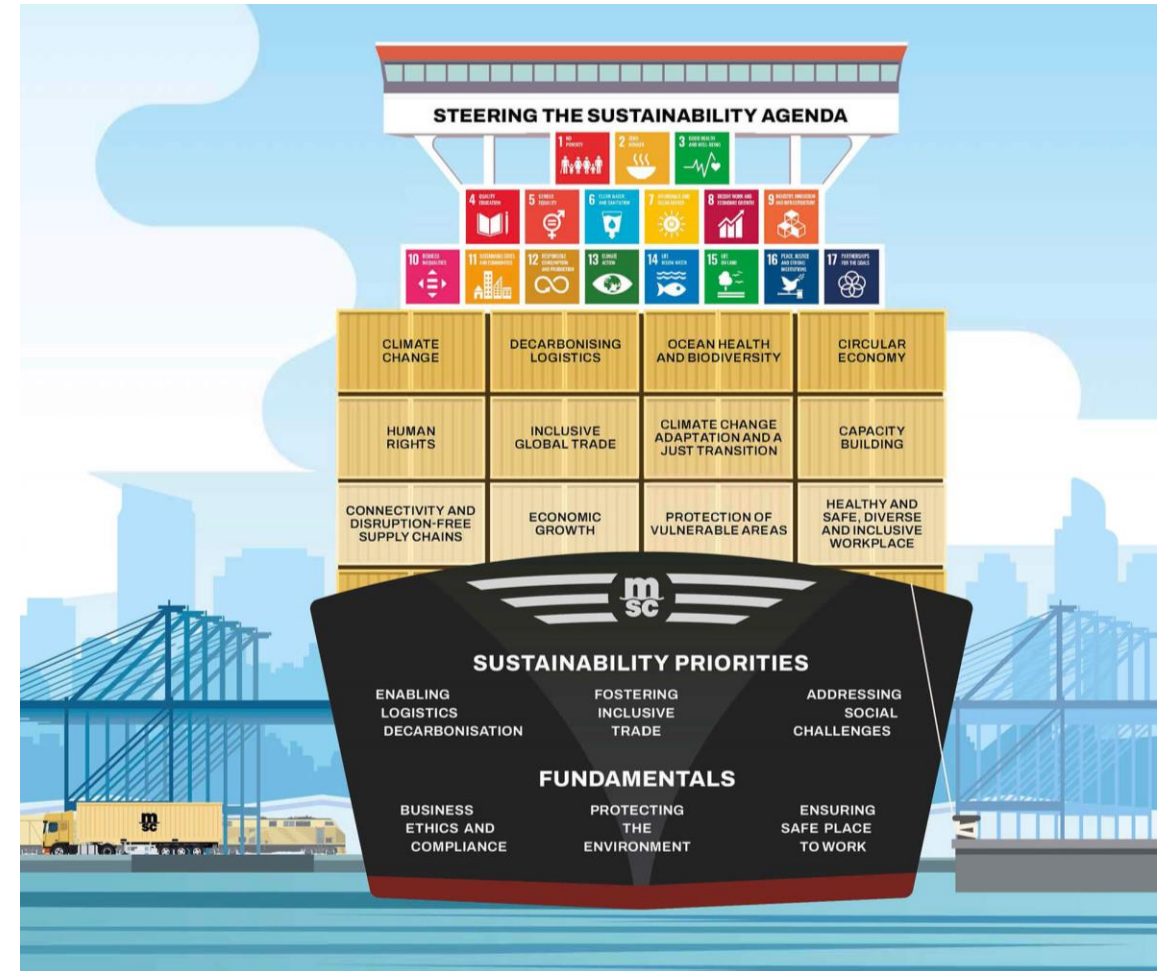
[MSC.COM/SUSTAINABILITY](https://www.msc.com/sustainability)

MSC Mediterranean Shipping Company (MSC) has a unique approach to sustainability, which is firmly embedded across our business and reflected in all that we do.

Sustainability is a strategic imperative for MSC and, above all, a business priority. We recognize the pivotal role we play in connecting the world, and our strong core values and long-term view drive our commitment to playing our part in creating a sustainable future.

We have a clear purpose and take pride in acting responsibly, collaborating with our stakeholders in search of solutions to address the global challenges of today and the emerging trends that will impact our business in the years and decades to come.

Our **Sustainability Roadmap** and **Sustainability Priorities** guide progress along our journey as we deliver on our commitments.





# MSC'S SUSTAINABILITY PRIORITIES

[MSC.COM/SUSTAINABILITY](https://www.msc.com/sustainability)



AIMING FOR **CARBON NEUTRALITY**  
SUPPORTING **LOGISTICS TRANSITION SOLUTIONS**  
MAINTAINING A **FOCUS ON ENERGY EFFICIENCY**



CONTRIBUTING TO **ECONOMIC GROWTH**  
BUILDING **RESILIENCE ACROSS THE GLOBAL VALUE CHAIN**  
DEVELOPING **LOCAL CAPACITY AND KNOW-HOW**



ADVANCING **HUMAN RIGHTS**  
PROMOTING **DIVERSITY, EQUITY AND INCLUSION**  
ENGAGING OUR **SUPPLY CHAIN**



# OUR JOURNEY TO NET ZERO

[MSC.COM/SUSTAINABILITY](https://www.msc.com/sustainability)

Climate action is a global imperative, requiring collective action as we navigate the energy transition. MSC has a key role to play in decarbonising logistics. Collaboration across the supply and value chain is key to enable to investments needed to decarbonise as well as accelerate solutions at scale.

MSC is enabling logistics decarbonisation aiming for **carbon neutrality**; supporting **logistics transition solutions**; and maintaining a focus on **energy efficiency**.



# OUR DECARBONISATION PATHWAY

**IMO**  
Regulatory Targets

EEXI, CII compliance\*

**GETTING TO ZERO COALITION**  
Voluntary Targets

**2019**

First LNG-ready vessels

**2021**

Strategic partnerships for future fuels

**2022**

First LNG-capable vessels

**2023**

Fleet carbon intensity - 40% from 2008 baseline

First net zero carbon emissions capable ship in service

**2030**

First net-zero fuel capable vessels

Fleet carbon intensity - 70% from 2008 baseline

Fleet carbon intensity EEOI - 70% from 2008 baseline

**2045**

-50% GHG emissions from 2008 baseline

Complete net decarbonisation

**2050**

**MSC MILESTONES**



\*IMO short term measures to reduce carbon intensity  
EEXI: Energy Efficiency Existing Ship Index  
CII: Carbon Intensity Indicator



# ENABLING SUSTAINABLE SUPPLY CHAINS

## DEPLOYING TRANSITION SOLUTIONS

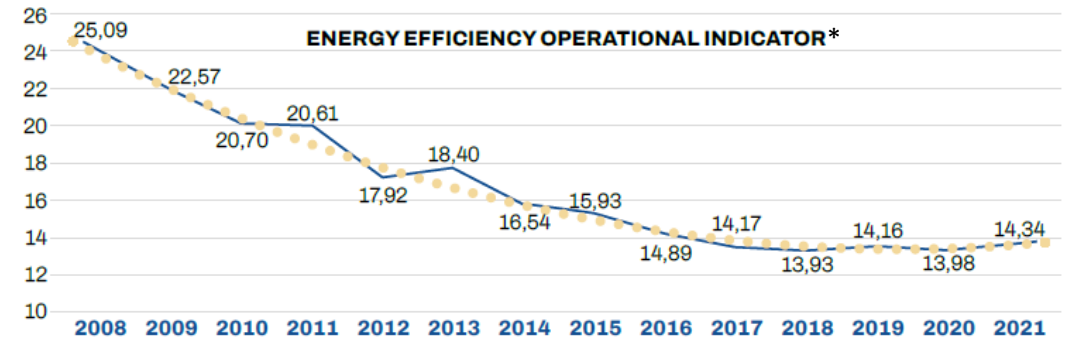
Our thinking is long-term while exploring all promising solutions at hand. MSC envisages a net zero future that will see shipping draw on a combination of future zero carbon fuels.

- **Green ammonia** and **green methanol** for larger ocean-going vessels
- **Green hydrogen, batteries** and **fuel cells** for smaller vessels/shorter trips
- **Nuclear** a potential option

To accelerate the energy transition, MSC is also deploying low-carbon fuels. Our carbon insetting programme **MSC Biofuel Solution** offers customers the opportunity to join forces with us to reduce their supply chain emissions. The transition will see the use of **LNG** evolve towards bio- and synthetic variants in the future.

## IMPROVING OUR ENERGY EFFICIENCY

- As we work towards our net-zero shipping target, we have set goals to progressively reduce our carbon intensity over the course of the coming decades.
- MSC operates one of the most modern fleets in the world, including the record-breaking MSC Gülsün class vessels. We continue implementing our fleet renewal comprising both newbuilds and retrofits to further improve efficiency
- Technological advances and innovations further improve efficiencies such as the implementation of a data-driven system, use of sensors and AI and air lubrication



# MSC FOUNDATION



Together we can make a difference!



# **CARGO DIVISION**

---





# MSC MEDITERRANEAN SHIPPING COMPANY

## A UNIQUE WORLDWIDE PRESENCE

---



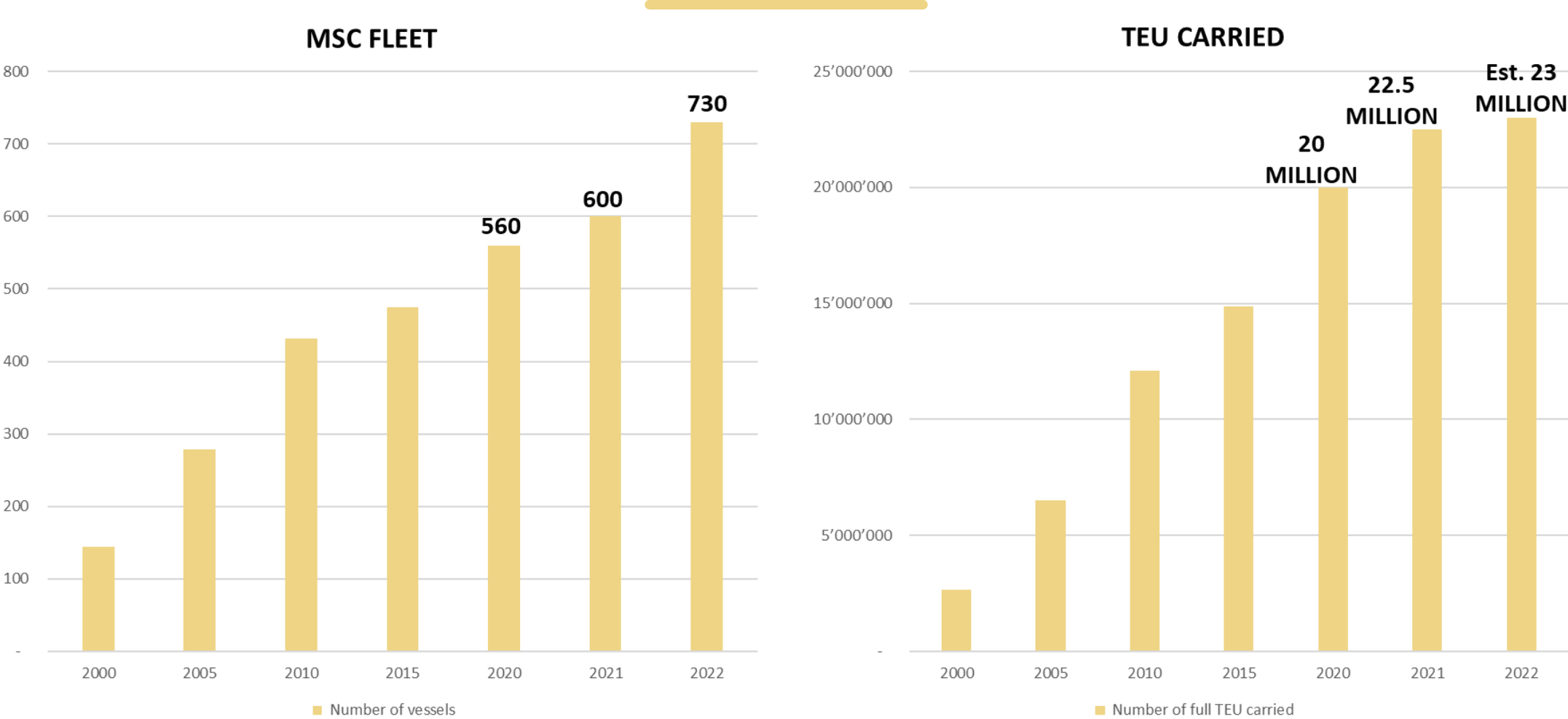


An aerial photograph of a massive stack of shipping containers on a ship, viewed from a high angle. The containers are stacked in neat rows, with a variety of colors including brown, blue, green, and red. The ship is on the ocean, and the sun is setting in the background, creating a bright orange glow and a reflection on the water. The text "ONE OF THE BIGGEST INVESTORS IN GLOBAL TRADE" is overlaid in white, bold, sans-serif font across the center of the image.

**ONE OF THE BIGGEST INVESTORS  
IN GLOBAL TRADE**



# MSC'S GROWTH





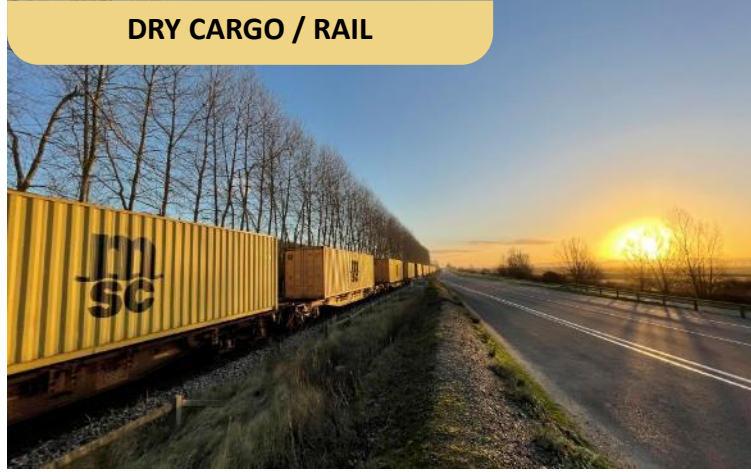
# MSC SOLUTIONS

[MSC.COM/SOLUTIONS](https://www.msc.com/solutions)

TRADE SERVICES



DRY CARGO / RAIL



WAREHOUSING



PROJECT CARGO / TRUCK



AIR CARGO



DIGITAL SOLUTIONS





# MSC AIR CARGO SOLUTION

[MSC.COM/AIRCARGO](https://www.msc.com/aircargo)



## shipped GENERAL

...WHEN YOU THINK ECONOMICAL AND RELIABLE.



## shipped FRESH

...WHEN FRESHNESS BECOMES OUR MISSION.



## shipped SPECIAL SOLUTION

...WHEN CUSTOMIZATION IS ESSENTIAL.



## shipped PHARMA

...WHEN INTEGRITY AND SPECIAL CARE IS KEY.



## shipped SECURE

...WHEN GETTING THERE SECURE IS EVERYTHING.

# MSC DIGITAL SOLUTIONS

[MSC.COM/DIGITAL-SOLUTIONS](https://www.msc.com/digital-solutions)

## myMSC

### OUR eBUSINESS PLATFORM ON MSC.COM

- Check vessel schedules
- Receive quotes in seconds with Instant Quote
- Place and manage bookings
- Manage the entire BL process
- Track your shipments
- Create and submit instructions and VGMs
- Access booking confirmations, arrival notices, invoices, vessel information and more
- View MSC shipments made via third-party platforms (INTTRA, GT Nexus, CargoSmart)

## MSC eBL

Offered via a third-party platform called Wave BL, MSC eBL is our new digital solution for processing the Bill of Lading (BL). This secure, user-friendly solution helps you – and your business partners – to save time, reduce costs and take another step towards your sustainability goals.

## DIRECT INTEGRATIONS

Data exchange with our partners and customers helps in decision-making on every level - from daily activities to strategic decision-making. Knowing how important it is, we offer solutions to exchange information directly in a system-to-system manner.

## SMART CONTAINERS

MSC partners with Traxens to enhance supply chain management for shippers through unprecedented visibility of dry cargo flow from door to door, adding efficiency, safety and predictability.



# MSC, A DRIVING FORCE IN STANDARDIZING TECHNOLOGY ACROSS THE SHIPPING INDUSTRY

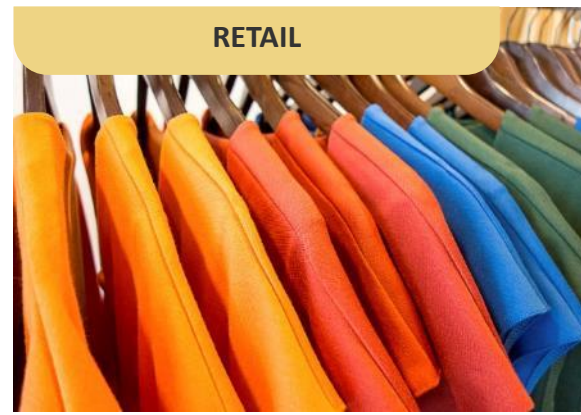
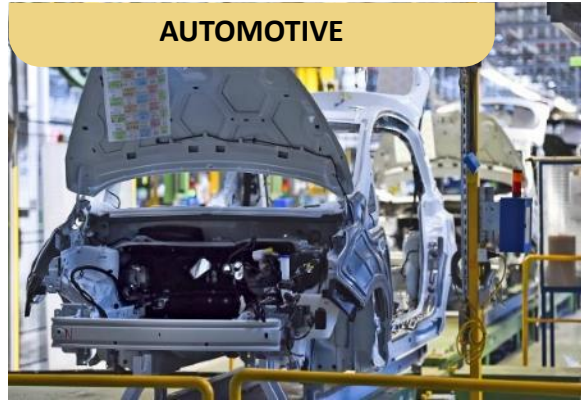


As a founding member of the Digital Container Shipping Association ([DCSA](#)), we help establish common technology standards for our industry, which will provide the foundation for collaboration and interoperability across the entire global supply chain.



# MSC'S INDUSTRY-SPECIFIC EXPERTISE

MSC has become the trusted transportation partner for so many of the world's most prestigious companies, delivering countless cargoes and commodities with the utmost care.







**TIL (TERMINAL INVESTMENT LIMITED)**  
[TILGROUP.COM](http://TILGROUP.COM)

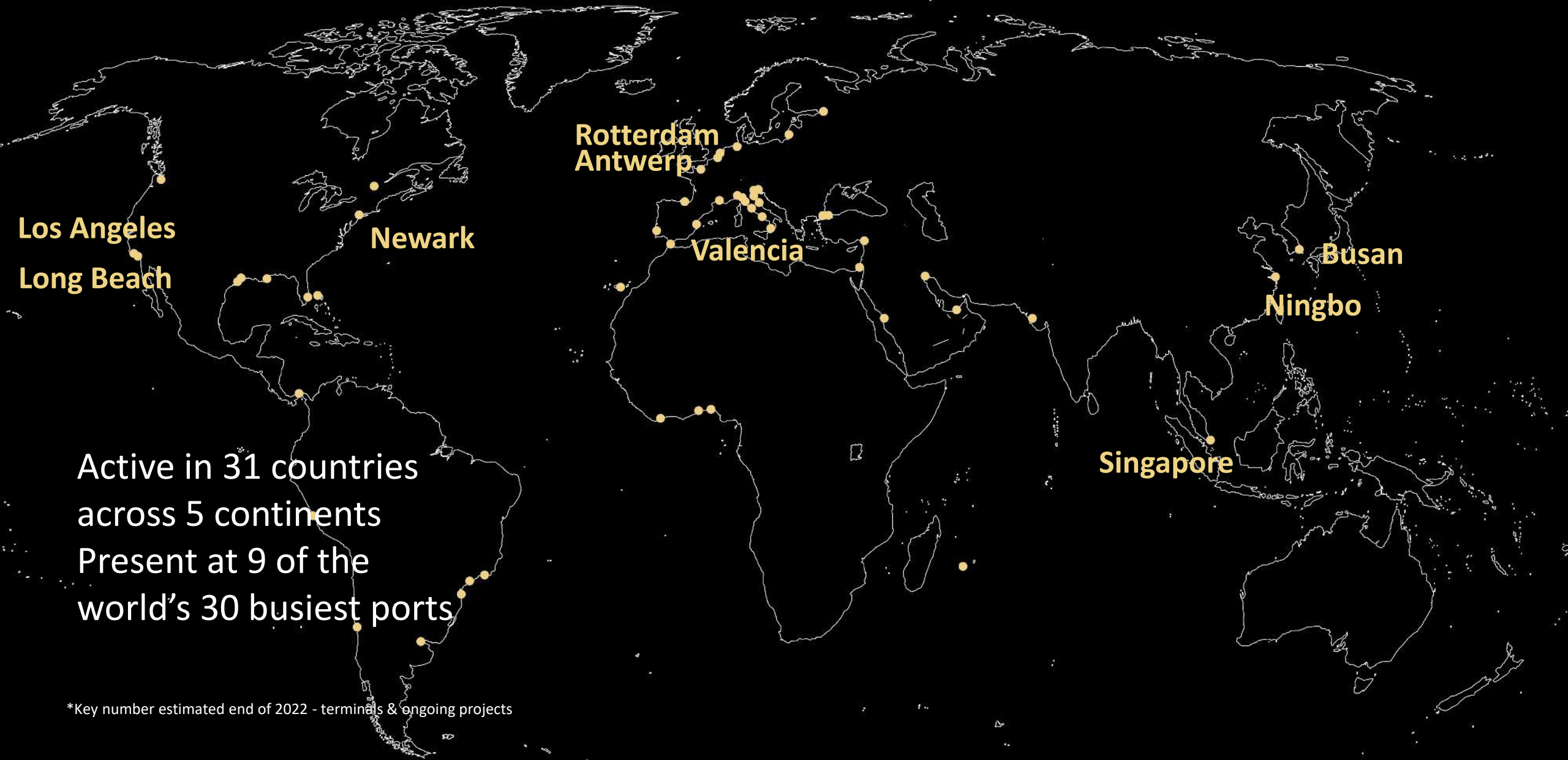
---

One of the world's largest and most geographically diverse container terminal operators and investors

- **70 terminals worldwide**
- **37 million** moves per year for both MSC and TiL terminals
- Since 2000, more than **double-digit growth** in volumes



# TIL 70\* TERMINALS WORLDWIDE



Los Angeles  
Long Beach

Newark

Rotterdam  
Antwerp

Valencia

Busan

Ningbo

Singapore

Active in 31 countries  
across 5 continents  
Present at 9 of the  
world's 30 busiest ports

\*Key number estimated end of 2022 - terminals & ongoing projects



# MEDLOG

ONE OF THE WORLD'S GEOGRAPHICALLY WIDEST LOGISTICS AND SUPPLY CHAIN PROVIDERS



- **MEDLOG** acts as an independent company in over **80 countries worldwide** and counts **10,000 employees**.
  - **MEDWAY** is the entity dealing with **rail operations**.
- MEDLOG's portfolio of solutions includes:
  - **Inland transport solutions** by road, rail or barge;
  - **Inland infrastructure** (Empty Container Depots; Off/On-dock Container Freight Stations (CFS); Warehousing and Distribution solutions)
  - **Value-added solutions** (Port Agent/Ship Consignment; Weighing And Fumigation solutions; Container Rental Or Sales; Collateral Management; etc.)



# MEDLOG

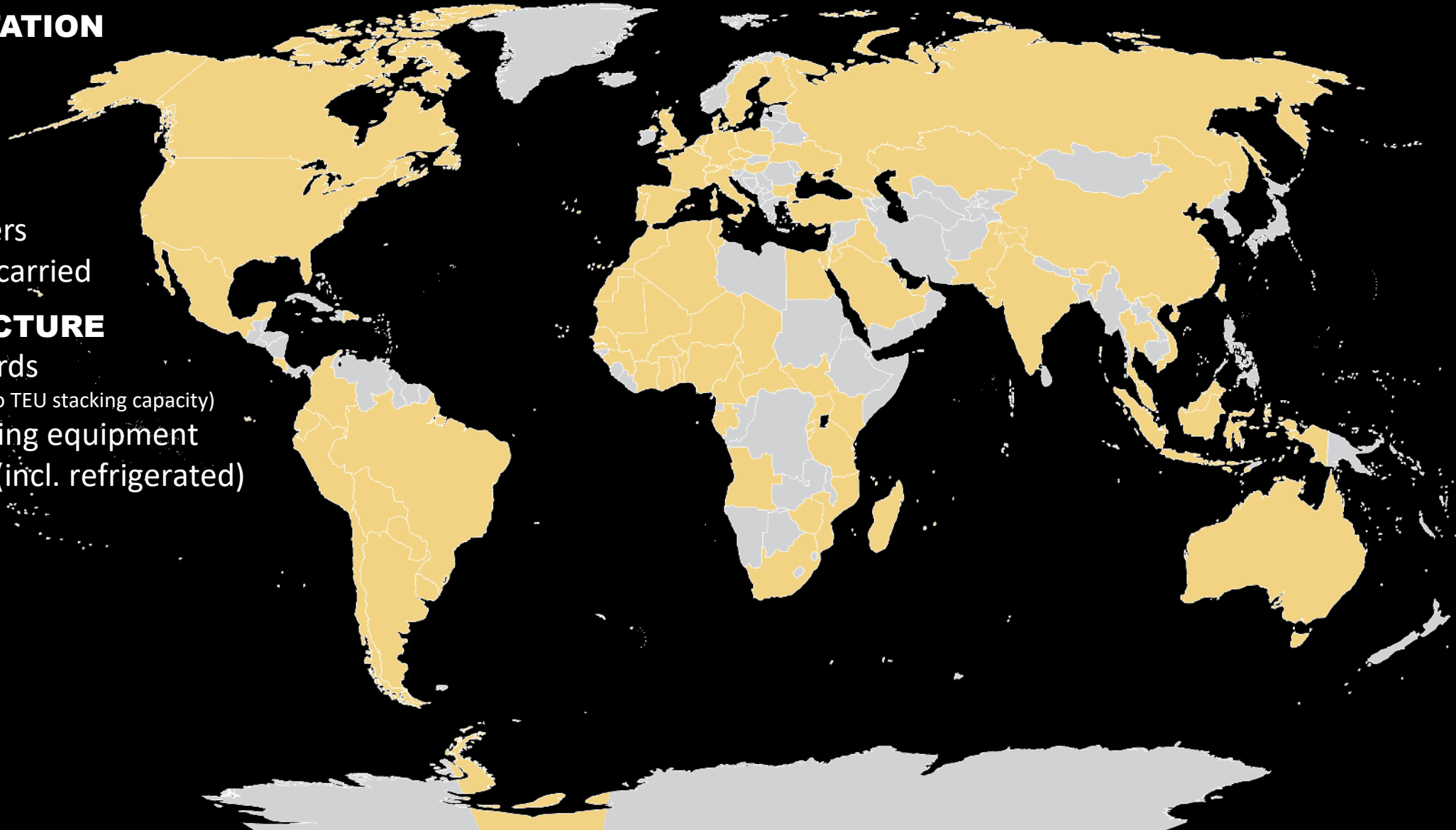
PRESENT IN OVER 80 COUNTRIES WORLDWIDE

## TRANSPORTATION

- trucks
- trailers
- rail wagons
- locomotives
- barges/feeders
- 5.2 Mio TEU carried

## INFRASTRUCTURE

- Operating yards  
(8.5 Mio sqm, 1 Mio TEU stacking capacity)
- container lifting equipment
- warehouses (incl. refrigerated)
- reefer plugs





# MEDLOG

## ONE-STOP-SHOP FOR GLOBAL INLAND SOLUTIONS

### INLAND TRANSPORTATION

- Transport Solutions By Truck/Rail/Barge

### INLAND INFRASTRUCTURE

- Empty Container Depots
- Off/On-dock Container Freight Stations (CFS)
- Warehousing And Distribution

### VALUE-ADDED SOLUTIONS

- Customs House Brokerage
- Reefer Solutions
- Project Cargo
- Port Agent/Ship Consignment
- Weighing And Fumigation
- Container Rental Or Sales
- Collateral Management

WAREHOUSING



DEPOTS & REEFER SOLUTIONS



TRUCKS & RAIL



FUMIGATION



# **PASSENGER DIVISION**

---





# MSC CRUISES

## THE CONTEMPORARY BRAND

- The world's third-largest and the fastest growing global cruise brand
- Number 1 cruise brand in Europe, South America, the Gulf Region and Southern Africa
- A strong presence in the Caribbean, North America and the Far East markets

# AROUND THE WORLD WITH MSC CRUISES

**85** COUNTRIES VISITED  
**190** ITINERARIES





# OCEAN CAY

[MSCOCEANCAY.COM](https://mscocancay.com)



**165**

Square km of marine reserve  
(64 square miles)



**400**

Coral relocations



**38**

Ha of land  
(95 acres)



**3**

Surrounding cays



**75,000**

Shrubs and plants native to the region



**80+**

Types of indigenous Caribbean trees, grasses, flowers and shrubs



**Many**

Distinct beach areas





## Discover the Ocean State of Mind

---

The luxury lifestyle travel brand of MSC Group

A fleet of 6 luxury ships, built by Fincantieri in Italy

461 ocean-front suites with private terraces

Suites starting at 35 sqm (377 sq ft), largest in the category

18 restaurants, bars and lounges

Ocean-inspired wellness and fitness experiences

Reimagined entertainment and lounging

Generous outdoor decks featuring 3 heated pools

---

SAILING SUMMER 2023  
[EXPLORAJOURNEYS.COM](https://www.explorajourneys.com)





# GRANDI NAVI VELOCI



A leading European shipping company operating in the fields of coastal navigation, cargo and passenger transport in the Mediterranean Sea, with a fleet of 19 ships, 18 prime destinations and 26 major routes.

[www.gnv.it](http://www.gnv.it)



# SNAV (SOCIETÀ NAVIGAZIONE ALTA VELOCITÀ)



SNAV operates ferry services in Italy and Croatia.  
Its fleet includes 25 fast ferries, 1 cruise ferry on 17 routes, and 92 connections/day (in summer).  
SNAV transported 4.4 million passengers in 2019.

[www.snav.it](http://www.snav.it)



